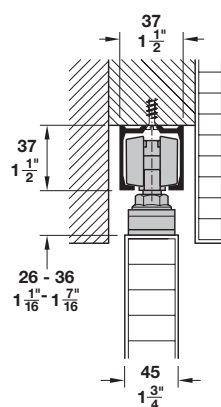
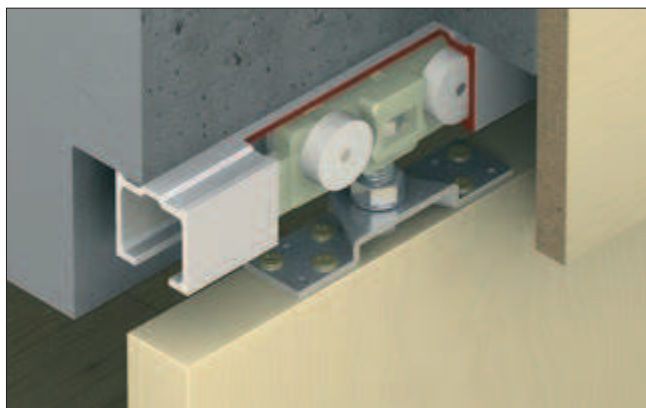
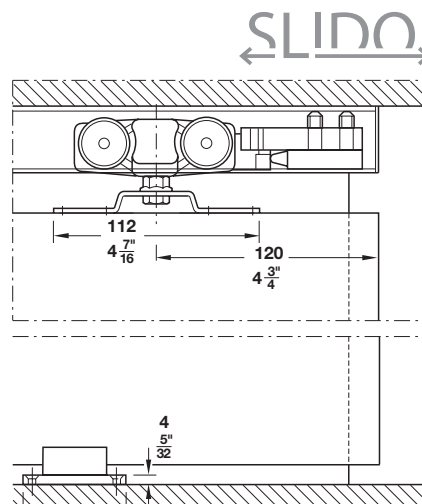


Slido Classic 160-P and 160-O

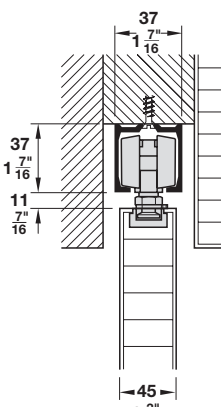
- Door weight up to: 160 kg (353 lbs.) per door
- For 1 and 2 sliding wood doors
- Door height adjustable: 160-P: +/-5 mm (3/16")
160-O: +/-3 mm (1/8")
- 160-P: Suspension fitting with support flange for screw mounting
- 160-O: Suspension fitting with flange clip for hooking in without tools



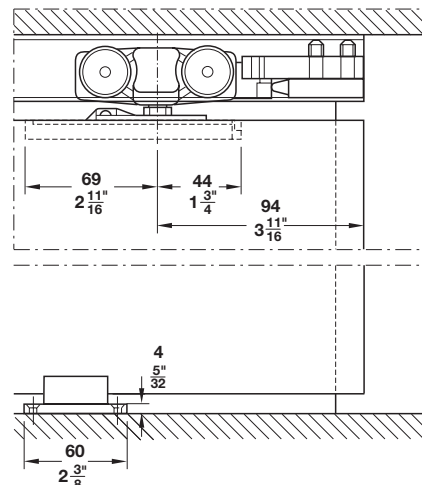
Ceiling installation
with wood door



Section hanger and trolley guide



Ceiling installation



Section guide and trolley hanger

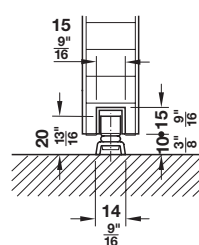
Slido Classic 160-P and 160-O Sets

- For 1 sliding door without upper track and soft close

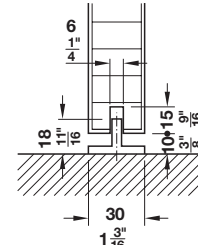
Fitting	Item No.
160-P	941.62.004
160-O	941.62.006

Note

For 2 bi-parting sliding doors, please order 2 sets.



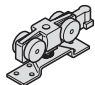
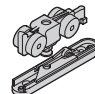
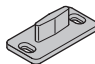
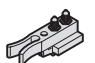
With guide channel



Without guide channel

Sliding door locks	pages 1.357, 1.364-1.368
Flush pulls	pages 1.363, 1.371-1.373
Pull handles	pages 2.10-2.32
Tracks, fascias and accessories	pages 1.16-1.17
Track cleaner	page 1.37

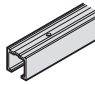
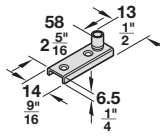
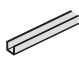
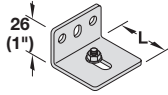
Slido Classic 160-P and 160-O Set Components

	Description	Material	Finish	Mounting	160-P	160-O	Item No.
	Running gear, suspension screw with nut, flange clip for hooking in (without tools), without soft close	Steel	galvanized	–	2 pcs.	–	941.62.013
	Running gear, suspension screw with nut, support flange for hooking in (without tools), without soft close	Zinc	nickel-plated	left	–	2 pcs.	941.62.016
				right	–	2 pcs.	941.62.017
	Floor guide	Plastic	gray	–	1 pc.	1 pc.	940.42.034
	Track stopper with retaining spring and rubber bumper	Plastic	gray	–	2 pcs.	2 pcs.	941.62.042

Note

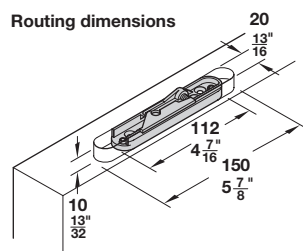
Item numbers are valid only for one piece, when ordering individual components, please state the desired amount.

Upper Tracks and Accessories

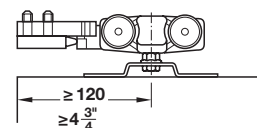
	Description	Material	Finish	Length	Item No.
	Upper track, pre-drilled	Aluminum	mill	2 m (6' 6 3/4")	941.62.200
				3 m (9' 10 1/8")	941.62.300
				6 m (19' 8 1/4")	941.62.600
			clear anodized	2 m (6' 6 3/4")	941.62.201
				3 m (9' 10 1/8")	941.62.301
				6 m (19' 8 1/4")	941.62.601
	Floor guide roller, Ø10 mm (3/8")	Steel	galvanized	–	940.42.032
	U-shaped guide track 15 x 15 x 1.5 mm (5/8" x 5/8" x 1/16")	Aluminum	bright	6 m (19' 8 1/4")	940.42.602
	Wall mounting bracket, with screw and nut L x H: 18 – 33 mm (11/16" – 1 5/16") x 26 (1")	Steel	galvanized	–	940.62.061

Note

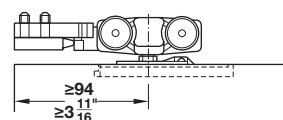
Install wall mounting brackets every 400 mm (15 3/4").



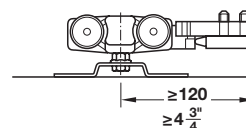
Versions overview



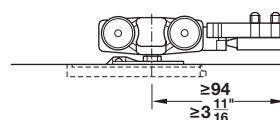
Version A – without Soft Close



Version A – without Soft Close. No minimum door width.



Classic 160-P



Classic 160-O

Dimensional data not binding. We reserve the right to alter specifications without notice.