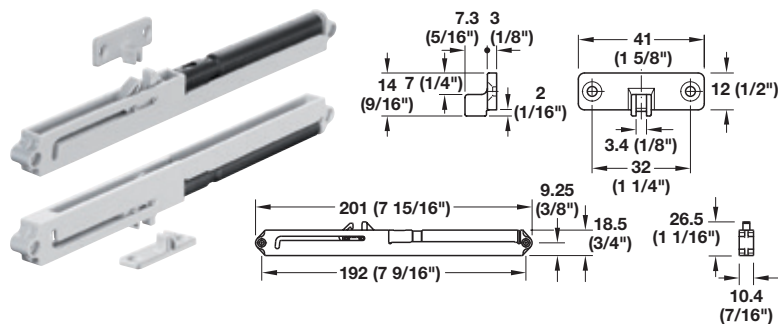


Soft Closing Mechanism

With follower for wood drawer box.



Weight capacity: 25 kg (55 lbs.) one-sided installation
50 kg (110 lbs.) two-sided installation

- Can be retrofitted for single extension runners
- Barely visible so furniture design remains unchanged
- User friendly gentle closing action

Material: Plastic; Color: light gray and black

Version	Item No.
For wood box	432.13.507
For metal box	432.13.508

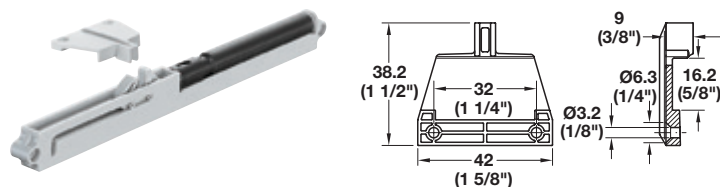
Supplied With

Mechanism
Follower
Installation instructions

Note

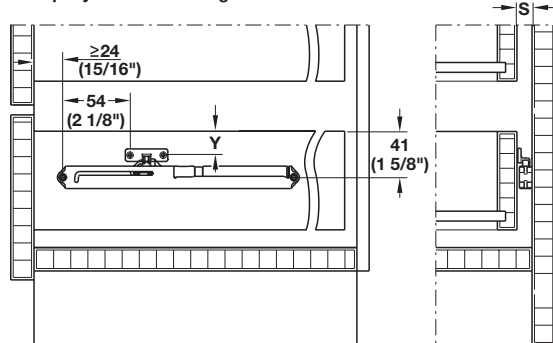
One or two-sided installation is determined by the width, running properties and weight capacity of the runners. Always use 2 mechanisms for drawers wider than 400 mm (15 3/4") or if the drawer depth exceeds the width.

With follower for single-wall metal box systems, thickness 16 (5/8").



Installation

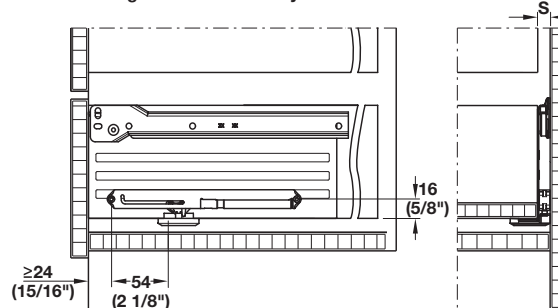
For epoxy and ball bearing runners



Side spacing = 12 to 15 (1/2" to 9/16")

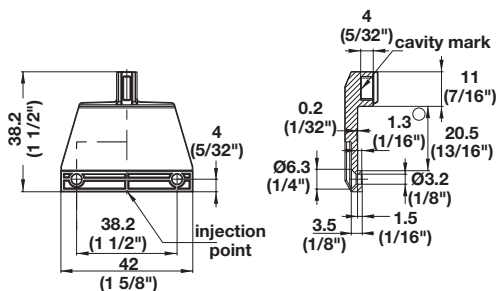
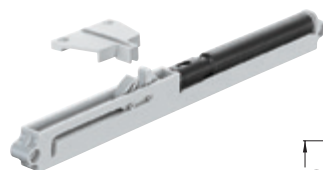
Installation

For single wall metal box systems



Side spacing = 12 to 15 (1/2" to 9/16")

8



Soft Closing Mechanism, for Grass Zargen

- Fits over Grass Zargen lip 20.5 mm (13/16")

Material: Plastic; Color: light gray and black

Description	Item No.
Actuator	432.13.592
Damper	432.13.511

Note

For Grass Zargen Drawer Box only.
Must purchase both actuator and damper, sold separately.