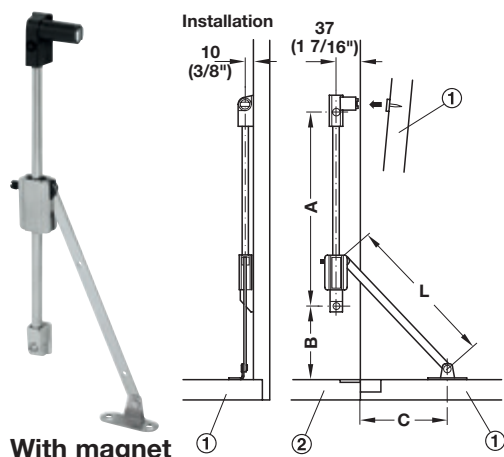


Häfele Star Stop Flap stay with braking mechanism

- With adjustable braking effect



With magnet

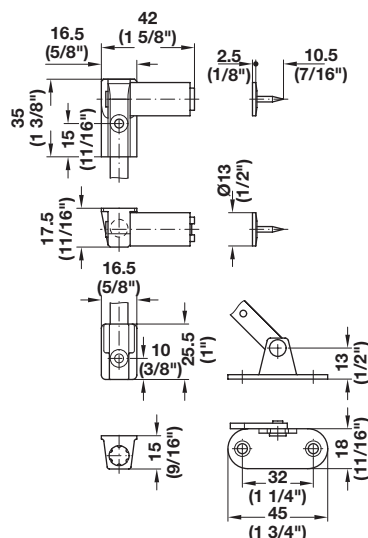
- With angular bracket
- Choose left or right hand
- For screw mounting into 32 mm series drilled holes

Material: Flat arm and screw-on bracket: Steel; Housing: Zinc Alloy;
Finish: nickel-plated; Bearing: Plastic; Finish: black

Note
The guide arm must be kept clean of oil, grease and cleaning agents.

- ① Flap
- ② Base panel

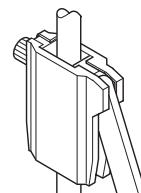
Determine dim. C by trial mounting.



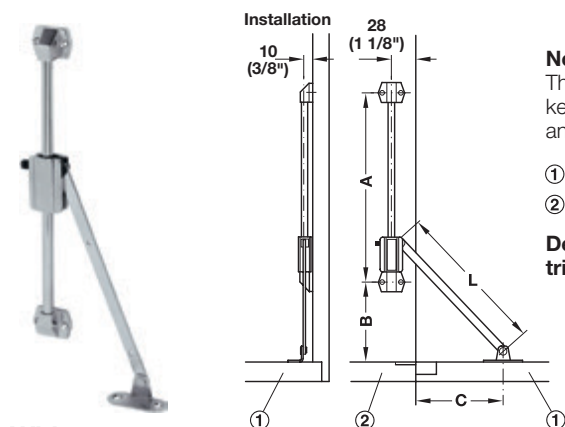
Braking Effect

Adjusting the braking effect with the screw

- Unscrew to increase braking effect
- Tighten screw to decrease braking effect



Mounting	Internal Cabinet Height	Dim. L	Dim. A	Dim. B	Item No.
Left	350 - 500 (13 3/4" - 19 3/4")	176 (7")	224 (8 3/4")	86.5 (3 7/16")	365.56.617
Right	350 - 500 (13 3/4" - 19 3/4")	176 (7")	224 (8 3/4")	86.5 (3 7/16")	365.56.608



Without magnet

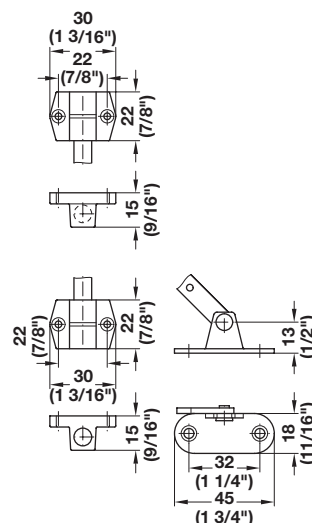
- With angular bracket with perforated flat arm for clamp
- Choose left or right hand
- For screw mounting

Material: Flat arm and bracket: Steel; Housing: Zinc Alloy
Finish: nickel-plated

Note
The guide arm must be kept clean of oil, grease and cleaning agents.

- ① Flap
- ② Base panel

Determine dim. C by trial mounting.



Mounting	Internal Cabinet Height	Dim. L	Dim. A	Dim. B	Item No.
Left	Min. 332 (13")	176 (7")	211 (8 1/4")	90 (3 9/16")	365.55.615
	Min. 460 (18")	241 (9 1/2")	309 (10 1/4")	120 (4 3/4")	365.55.655
	Min. 556 (19 7/8")	292 (11 1/2")	372 (14 1/4")	150 (5 15/16")	365.55.695
Right	Min. 332 (13")	176 (7")	211 (8 1/4")	90 (3 9/16")	365.55.605
	Min. 460 (18")	241 (9 1/2")	309 (10 1/4")	120 (4 3/4")	365.55.645
	Min. 556 (19 7/8")	292 (11 1/2")	372 (14 1/4")	150 (5 15/16")	365.55.685



Clamp

- Holds the flap closed

Material: Plastic; Finish: nickel-plated

Color	Item No.
black	365.67.360

Flap hinges

pages 9.88-9.89

Dimensions in mm
Inches are approximate